

Cadence Web Access

Offers Axis Global Customers Powerful Order Entry and Information Retrieval System



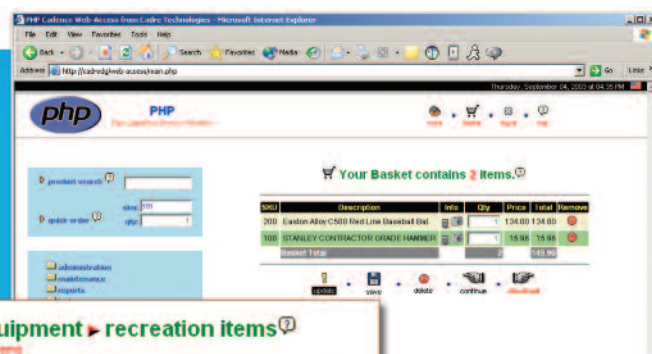
Cadence Web Access – a powerful, browser-based order entry and information retrieval system that connects directly to Axis' Cadence Fulfillment System and the Axis Trak Transportation Management System – is now available to customers of Axis Global Logistics.

This powerful tool gives Axis customers access to Cadence Warehouse and Order Management Systems via the Internet and allows them to search product catalogs, build and place orders, check order status, locate inventory, track the status of shipments and verify delivery information.

Cadence Web Access organizes customer-specific product catalogs that let users search for and select products and add them to shopping carts to build orders and quotations. The system also provides catalog searching, product images (photos, thumbnails, and illustrations), style sheets, detailed product information (availability, unit of measure, color, style, etc.) and manages allocations and distribution lists.

Internet access to a powerful central warehouse and order management system improves information, performance and service. **Cadence Web Access** is an extension of Axis Global Logistics' unique warehouse-centric Cadence Fulfillment System, which operates multiple logistics operations, eliminating the need for expensive and cumbersome interfaces between different systems. The Cadence System operates on a Microsoft SQL Server database that maintains information about products, customers, orders, vendors, and shipments.

Cadence Web Access allows your virtual warehouse to deliver a whole new level of service. Customer information, security and associated catalog information are rules-based and can be individualized for each client, customer or groups of customers. **Cadence Web Access** is highly configurable to allow variable design themes and order rules for different clients and customers. The system also lets users send orders to multiple accounts on user-defined distribution lists of ship-to addresses and manage order templates for recurring orders.



Cadence Web Access Benefits:

Secure User Login provides access to specific ship-to addresses, customer catalog, order processing rules, and other account-based rules/information;

Customized Design for Each Customer Login can also load customized web page design, which can be different for each customer/customer group;

Built for B2B and B2C so users can enter orders for existing accounts (B2B) or build orders and then enter shipping and credit information;

Build a "Quick" Order with product SKU and quantity;

Functions Menu offers variable capabilities, based on permissions;

Scrolling Marquee message can change for each customer, based on Login;

Basket/Order provides view of current order with a user-friendly approach to management of order;

User Profiles are managed by client/ customer with administrative permission;

Address Maintenance function lets users update default delivery address or add new ship-to's;

Product Search Help can be customized per client;

Client Profile allows client to maintain order processing, catalog, contacts, and other rules;

Marquee Maintenance feature lets client change content by promotion, effective dates, and scope of audience;

Projects Maintenance offers client ability to post information to customers, i.e., spreadsheets, reports, etc;

SKU Maintenance lets clients modify their SKUs;

Sessions feature means that clients can monitor on-line activity of customers/users;

Product Lookup offers multiple search fields that provide drill-down and drill-around searching capabilities;

Results shows status, activity and profile for each SKU;

Order Lookup features multiple search fields that provide drill-down and drill-around capabilities;

Order Lookup Results summarizes information with links to more detail and tracking;

Delivery Tracking lets you go directly to AGL Air-Trak Web Site for real-time status update;

Tracking gives you results of tracking from previous screen, including tracking ID and dates;

Customer Lookup offers multiple search fields that provide different ways to find the right customer;

Customer Search Results lets user select appropriate customer from all customers who qualify for search;

Distribution List is designed for orders that ship to multiple customers;

Maintain Lists feature makes it possible for you to add or delete customers from Distribution Lists;

File Download provides access to information from the product database;

Product Catalog is organized by Families, Groups and Categories in a drill down search tool;

Item Detail includes product information such as: description, UOM, status, min/max, product image and other details;

Availability Information allows quantities to be displayed as on-hand, available, etc.; back order status is also displayed;

Template Orders make it possible for you to set up recurring orders for common sets of products – these orders also may be copied and edited;

Ship-To Information provides access to current address, enter-override address, or select distribution list;

Step-by-Step Check-Out takes you through the process quickly and easily;

Order Information lets you enter and/or update information about carrier, P.O., date, back-order, contact info, etc.;

Order Confirmation via instant email alerts;

Real-Time Entry means that as soon as an order is entered it automatically downloads into the Cadence Warehouse Management System and that a printed order along with the confirmation number are immediately available.



Worldwide Corporate Headquarters

Axis Global Logistics
5901 West Side Avenue, Suite 503
North Bergen, NJ 07047

800-568-4901, Email: sales@axisg.com, Web: www.axisg.com

Tel: 800-568-4901, Fax: 718-458-5122